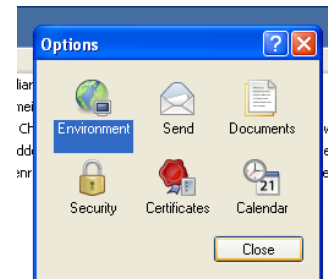
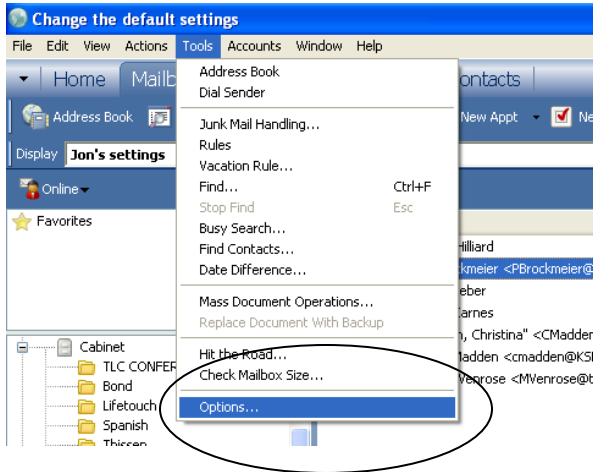
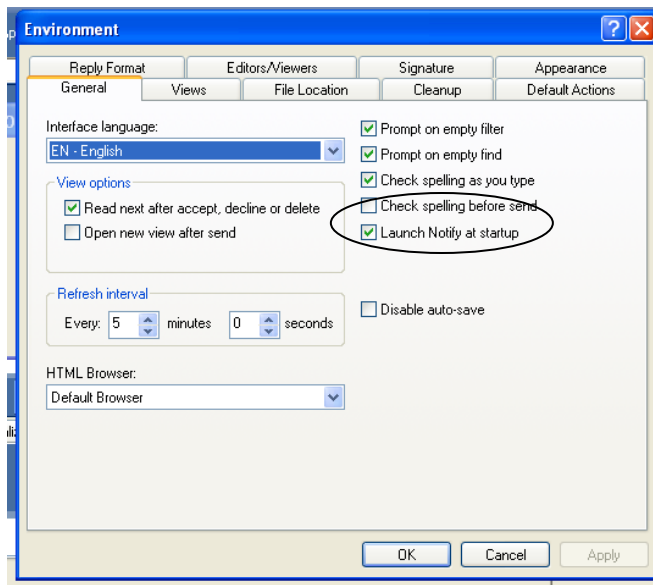


## Turning Off Notifier in Groupwise

In order to turn on or off the notifier function in Groupwise you first open the program, select Tools, the Options.



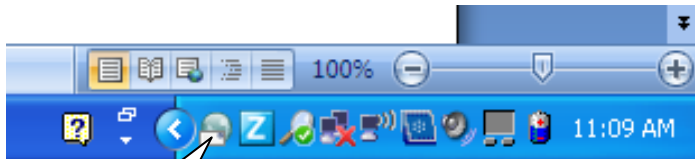
This will present you with a screen that allows you to choose Environment



Make sure the checkbox beside “Launch Notify at Startup” is unchecked if you want to turn off Notify. If this is checked, it launches Notify at startup and keeps you logged in to Groupwise. You will not have to put in a password to get into your mail from this computer.

Once you have made your selection, click apply and OK. Close the options screen and you are back in Groupwise.

You have one final step to complete the process of turning off Notify. At this time it is running in the background. If you look in the lower right corner of your computer screen you will see the programs that are active in the background.



This is the Notify icon.

Right click on the notify icon and select exit to turn the program off.

